

AS - SLATTED FLOORS

for pig sty
according to EN 12737

piglet rearing | pig keeping | sow management



SUDING[®]
www.suding.info

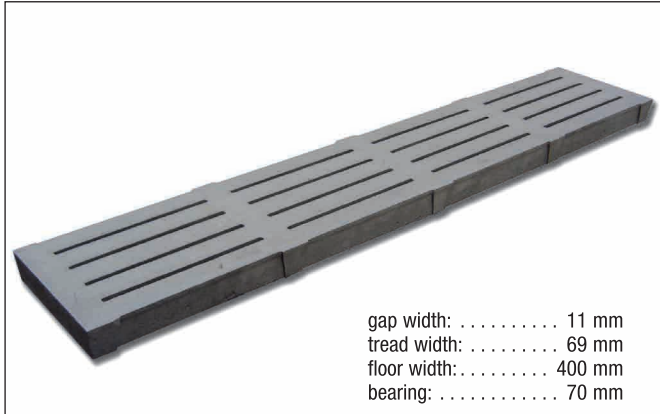
AS-Piglet Floors

Manufactured according to EN 12737 – Concrete strength class C40/50



AS-Suckling Piglets Floor 11-40

With its gap width of 11 mm this slatted floor has been developed for suckling piglets. As it has a loading capacity of 125 kg animal weight (load class B2), the AS-11 exceeds the requirements of the norm.

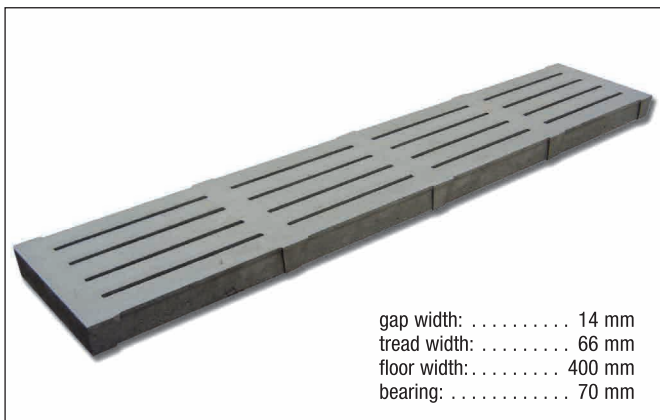


Length mm	Height mm	Weight/kg piece	s.qm	No. Bar
800	70	38	120	1
900	70	43	120	1
1000	70	48	120	1
1100	70	53	120	1
1200	70	58	120	2
1300	70	62	120	2
1400	70	67	120	2
1500	70	72	120	2
1600	70	77	120	2
1700	70	82	120	2
1800	80	101	140	3
1900	80	106	140	3

Length mm	Height mm	Weight/kg piece	s.qm	No. Bar
2000	80	112	140	3
2100	90	126	150	3
2200	90	132	150	3
2300	90	138	150	4
2400	90	144	150	4
2500	100	167	167	4
2600	100	173	167	4
2700	100	180	167	4
2800	110	200	179	5
2900	110	207	179	5
3000	110	214	179	5

AS-Weaner Floor 14-40

Through the load bearing of up to 125 kg animal weight (load class B2) and a gap width of 14 mm, this floor is especially adjusted to the needs of weaners. The tread width of 66 mm complies with the directive for pig keeping and ensures the required concrete covering.



Length mm	Height mm	Weight/kg piece	s.qm	No. Bar
800	70	38	120	1
900	70	43	120	1
1000	70	48	120	1
1100	70	53	120	1
1200	70	58	120	2
1300	70	62	120	2
1400	70	67	120	2
1500	70	72	120	2
1600	70	77	120	2
1700	70	82	120	2
1800	80	101	140	3
1900	80	106	140	3

Length mm	Height mm	Weight/kg piece	s.qm	No. Bar
2000	80	112	140	3
2100	90	126	150	3
2200	90	132	150	3
2300	90	138	150	4
2400	90	144	150	4
2500	100	167	167	4
2600	100	173	167	4
2700	100	180	167	4
2800	110	200	179	5
2900	110	207	179	5
3000	110	214	179	5



SUDING-Concrete-Slatted-Floors for pigs are produced according to DIN EN 12737. They are certified by the Güteschutz Nord e.V. through factory production control and the product-certificate "Floor slats for livestock". We will be happy to provide you with an EC declaration of performance to prove that our slats meet the requirements of the European norm.

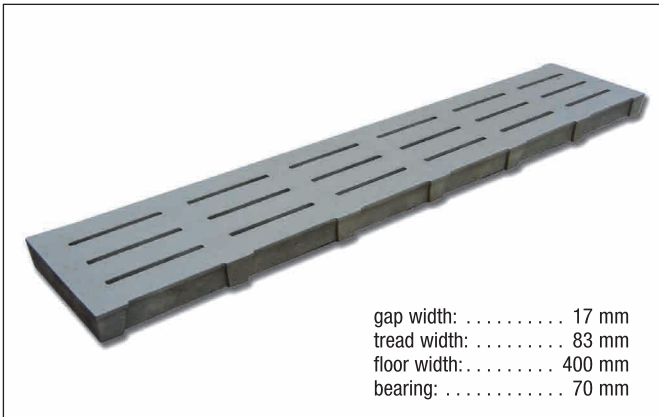
AS-Piglet Floors

Manufactured according to EN 12737 – Concrete strength class C40/50



AS-Pig Floor 17-40

Due to its perforation grade of 15 % at the most, this floor can be used in every area of the pig sty and it offers optimal cleanliness. Through the load bearing of up to 250 kg animal weight (load class B2/B3) this floor is used in the fattening sector as well as for group housed sows.



Length mm	Height mm	Weight/kg piece	Weight/kg s.qm	No. Bars
700	70	35	124	1
800	70	40	124	1
900	70	45	124	1
1000	70	50	124	2
1100	70	55	124	2
1200	70	60	124	2
1300	70	65	124	2
1400	70	70	124	3
1500	70	75	124	3
1600	70	80	124	3
1700	70	85	124	4
1800	80	98	137	4
1900	80	104	137	4

Length mm	Height mm	Weight/kg piece	Weight/kg s.qm	No. Bars
2000	80	109	137	5
2100	90	129	154	5
2200	90	136	154	5
2300	90	142	154	6
2400	90	148	154	6
2500	100	171	171	6
2600	100	178	171	7
2700	100	185	171	7
2800	110	205	183	7
2900	110	212	183	8
3000	110	220	183	8
3100	120	241	195	9
3200	120	250	195	9

AS-Pig Floor 17-50

With a load bearing of up to 125 kg animal weight (load class B2) the AS-17-50 is the classical slatted floor for fattening pigs. This floor has the advantage of a better combination ability of short and long concrete elements, due to only 3 differences in elevation.

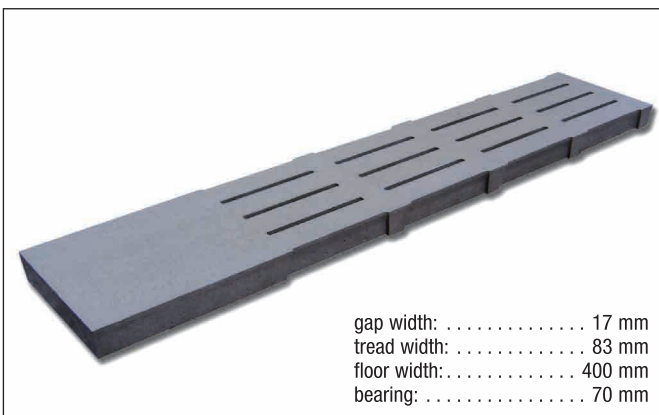


Length mm	Height mm	Weight/kg piece	Weight/kg s.qm	No. Bars
700	70	41	118	1
800	70	47	118	1
900	70	53	118	1
1000	70	59	118	1
1100	70	65	118	1
1200	70	71	118	2
1300	70	77	118	2
1400	70	83	118	2
1500	70	89	118	2
1600	70	94	118	2
1700	70	100	118	2

Length mm	Height mm	Weight/kg piece	Weight/kg s.qm	No. Bars
1800	70	106	118	3
1900	70	112	118	3
2000	70	118	118	3
2100	80	139	132	3
2200	80	145	132	3
2300	80	152	132	4
2400	80	158	132	4
2500	90	185	148	4
2600	90	193	148	4
2700	90	200	148	4

AS-Partly Slatted Floor

This slatted floor is available with a partially closed surface and is suited especially for the sty passage and the ventilation in the cubicle. Load bearing up to 250 kg animal weight (load class B2/B3).



Length mm	Height mm	Weight/kg at 500 mm piece	Weight/kg at 600 mm piece	Weight/kg at 500 mm s.qm	Weight/kg at 600 mm s.qm
1200	70	61	127	62	128
1300	70	66	127	67	128
1400	70	71	127	72	128
1500	70	76	127	77	128
1600	70	81	127	82	128
1700	70	86	127	87	128
1800	80	101	140	102	141
1900	80	106	140	107	141
2000	80	112	140	113	141
2100	90	133	158	134	159
2200	90	139	158	140	159

Length mm	Height mm	Weight/kg at 500 mm piece	Weight/kg at 600 mm piece	Weight/kg at 500 mm s.qm	Weight/kg at 600 mm s.qm
2300	90	145	158	146	159
2400	90	152	158	153	159
2500	100	175	175	176	176
2600	100	182	175	183	176
2700	100	189	175	190	176
2800	110	209	187	210	188
2900	110	217	187	218	188
3000	110	224	187	225	188
3100	120	247	199	248	200
3200	120	255	199	256	200

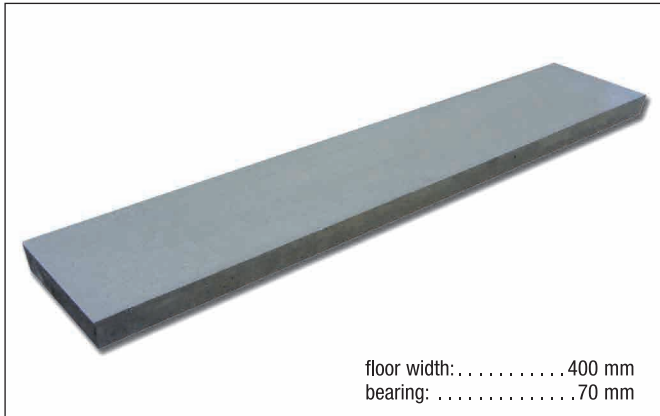
AS-Piglet Floors

Manufactured according to EN 12737 – Concrete strength class C40/50



AS-Closed Slabs

For the universal use in the sty and other buildings. Due to the same heights, a combination with other concrete slatted floors is possible without any difficulties. Load bearing up to 250 kg animal weight (load class B2/B3).

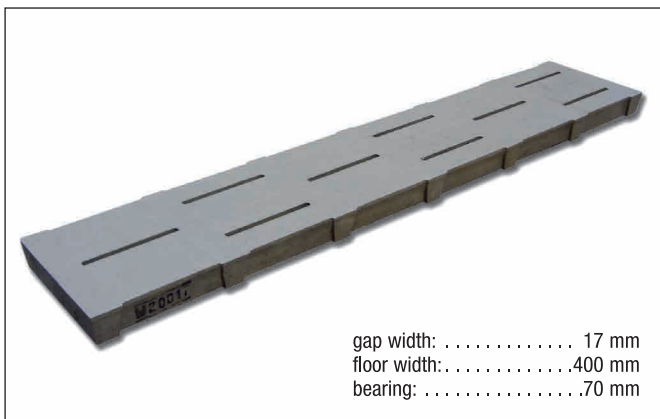


Length mm	Height mm	Weight/kg	
		piece	s.qm
700	70	40	143
800	70	46	143
900	70	52	143
1000	70	57	143
1100	70	63	143
1200	70	69	143
1300	70	74	143
1400	70	80	143
1500	70	86	143
1600	70	92	143
1700	70	97	143
1800	80	115	160

Length mm	Height mm	Weight/kg	
		piece	s.qm
1900	80	122	160
2000	80	128	160
2100	90	146	174
2200	90	153	174
2300	90	160	174
2400	90	167	174
2500	100	186	186
2600	100	193	186
2700	100	201	186
2800	110	222	198
2900	110	230	198
3000	110	238	198

AS-Eco Slatted Floors

This slatted floor with a gap width of 17 mm has a gap proportion of under 10% and is used as a partial slatted floor in the resting area. Maximum load bearing of up to 250 kg animal weight (load class B2/B3).

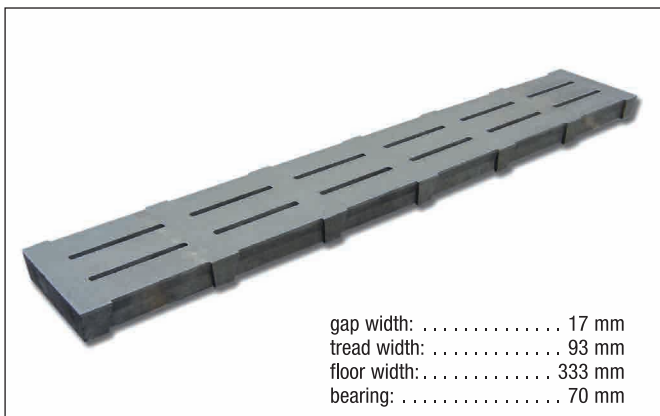


Length mm	Height mm	Weight/kg		No. Bar
		piece	s.qm	
700	70	37	130	1
800	70	42	130	1
900	70	47	130	1
1000	70	53	130	2
1100	70	58	130	2
1200	70	63	130	2
1300	70	68	130	2
1400	70	74	130	3
1500	70	79	130	3
1600	70	84	130	3
1700	70	89	130	4
1800	80	103	144	4
1900	80	109	144	4

Length mm	Height mm	Weight/kg		No. Bar
		piece	s.qm	
2000	80	115	144	5
2100	90	136	162	5
2200	90	143	162	5
2300	90	149	162	6
2400	90	156	162	6
2500	100	180	180	6
2600	100	187	180	7
2700	100	195	180	7
2800	110	216	193	7
2900	110	223	193	8
3000	110	231	193	8
3100	120	250	201	9
3200	120	257	201	9

AS-Pig Floor 17-33

This floor is especially suited for the exchange of floors in old buildings. The low weight per piece as well as the width of 333 mm makes the installation and removal quick and easy.



Length mm	Height mm	Weight/kg		No. Bar
		piece	s.qm	
700	70	30	127	1
800	70	34	127	1
900	70	38	127	1
1000	70	42	127	2
1100	70	46	127	2
1200	70	51	127	2
1300	70	55	127	2
1400	70	59	127	3
1500	70	63	127	3
1600	70	68	127	3
1700	70	72	127	4
1800	80	83	139	4
1900	80	88	139	4

Length mm	Height mm	Weight/kg		No. Bar
		piece	s.qm	
2000	80	93	139	5
2100	90	108	154	5
2200	90	113	154	5
2300	90	118	154	6
2400	90	123	154	6
2500	100	141	170	6
2600	100	147	170	7
2700	100	153	170	7
2800	110	172	184	7
2900	110	178	184	8
3000	110	184	184	8
3100	120	205	198	9
3200	120	211	198	9

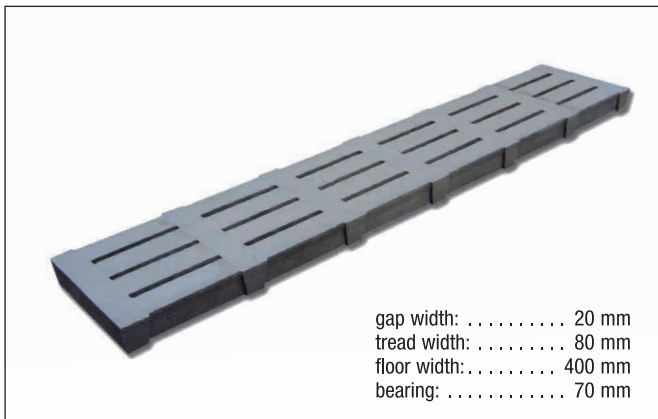
AS-Sow Floors

Manufactured according to EN 12737 – Concrete strength class C40/50



AS-Sow Floor 20-40

The classical floor for young sows, sows and boars, manufactured according to the new DIN EN 12737. Load bearing up to 250 kg animal weight (load class B3). With a gap width of maximum 20 mm and a tread width of 80 mm this floor fulfills the livestock regulation requirements.



Length mm	Height mm	Weight/kg piece	No. s.qm	No. Bar
700	70	34	120	1
800	70	38	120	1
900	70	43	120	1
1000	70	48	120	2
1100	70	53	120	2
1200	70	58	120	2
1300	70	62	120	2
1400	70	67	120	3
1500	70	72	120	3
1600	70	77	120	3
1700	70	82	120	4
1800	80	92	128	4
1900	80	97	128	4

Length mm	Height mm	Weight/kg piece	No. s.qm	No. Bar
2000	80	102	128	5
2100	90	129	154	5
2200	90	136	154	5
2300	90	142	154	6
2400	90	148	154	6
2500	100	168	168	6
2600	100	175	168	7
2700	100	181	168	7
2800	110	203	181	7
2900	110	210	181	8
3000	110	217	181	8
3100	120	240	193	9
3200	120	247	193	9

AS-Sow floors with smoothed edges



Advisors and veterinary surgeons have increasingly higher standards for gap finishing in concrete floors for the proper keeping of sows. SUDING has - as the first German producer - responded to these demands and is offering now the mechanical finishing of these gaps according to the requirements. The AS - sow gap floors will after the solidifying process be treated by a computer operated grinder equipped with optical sensors. This leads to smoother edges without any sharp parts, thus significantly reducing the risk of injuries of sows.

For further details and information please
 visit our website:

www.SUDING.info

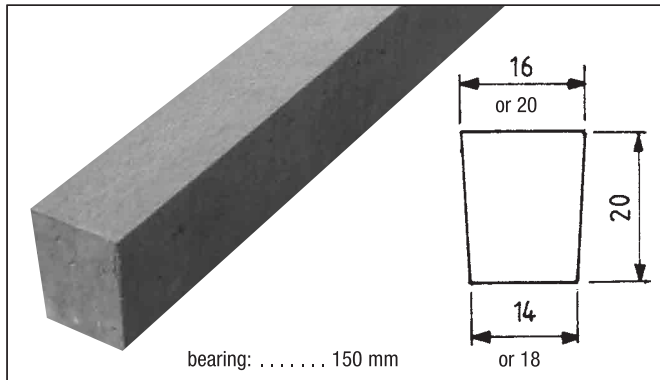
Accessories for slatted floors

for successful pig keeping



AS-Beams 16-20 and 20-20

For slatted floors in pig and sow sties.
Concrete strength class C40/50.



Length mm	Height mm	Upper width	Weight kg/piece
1000	200	160	72
1100	200	160	79
1200	200	160	86
1300	200	160	94
1400	200	160	100
1500	200	160	108
1600	200	160	115
1700	200	160	122
1800	200	160	130
1900	200	160	137
2000	200	160	144
2100	200	160	151
2200	200	160	158
2300	200	160	166
2400	200	160	173
2500	200	160	180

Length mm	Height mm	Upper width	Weight kg/piece
2600	200	160	187
2700	200	160	194
2800	200	160	202
2900	200	160	209
3000	200	160	216
3100	200	200	283
3200	200	200	292
3300	200	200	301
3400	200	200	310
3500	200	200	319
3600	200	200	328
3700	200	200	337
3800	200	200	346
3900	200	200	356
4000	200	200	365

Gap Caps



With the quick and easy use of gap caps for pig floors you reduce the gap proportion within a bay or the complete sty. That way one avoids possibly the complete exchange of the slats and also the complicated and time-consuming disassembly and assembly of the sty fittings. The installation of the gap caps is done in no time at all.

The gap caps are 465 mm long and are suited for all SUDING-Slatted Floors.

Delivery including 2 x VA-screws.

Accessories for slatted floors

RUBBER STRIPES:



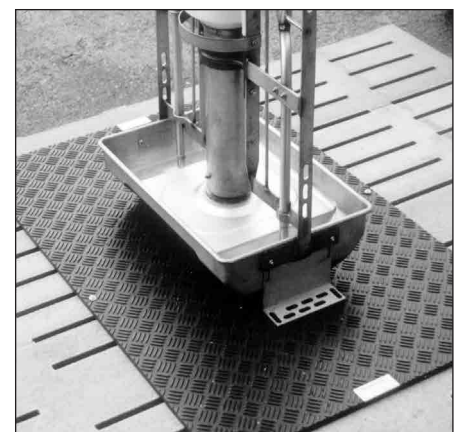
10 cm wide/0,5 cm thick; 8 cm wide/ 1,0 cm oder 7 cm wide/ 0,5 cm thick
Used as padding resp. height adjustment

SLAT PROTECTION:



Remmers Crete TF
3-component polyurethane coating
3 kg for 7,5m² surface

GROOVED PLASTIC BOARD:



as protection against feedacids
122 x 244 cm - 24 VA-screws/plugs
122 x 122 cm - 12 VA-screws/plugs
122 x 81 cm - 10 VA-screws/plugs

Instruction Sheet Concrete Slats

Concrete slats are cheap and durable, but they require diligence in transport, storage and laying.

One thing should be clear from the start: when laying slats you need to take your time. Mistakes, that are made, if the slats are laid too quick or careless, are not, or only correctable with great effort. The time that is taken when laying the slats without mistakes, pays off when there are no damages to the slats so it allows the healthy well-being of livestock free of injuries.

Delivery

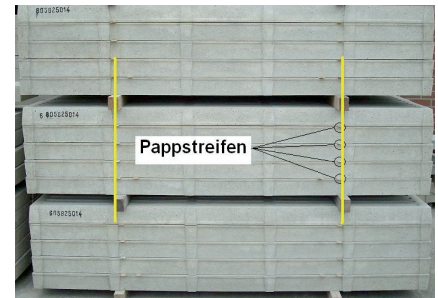
It has to be checked on delivery that the delivered slats meet the order. Complaints that are noticed on delivery have to be noted on the delivery note and reported to the vendor within 24 hours. We assume that you have received a faultless delivery, if we do not get a negative feedback within one week after delivery.

Storage

The slats have to be stored horizontally on solid ground. The delivered packs are not allowed to be stored too high. Under no circumstances are whole delivered packages allowed to be put onto the final bearing of the slats.



The slats are partially delivered and stored on squared timber. It is important that these are stable and even, in order to guarantee no sliding and tilting of the packs. The squared timbers have to be exactly in a vertical line. Between the slats are often cardboard strips, which also have to be in line with the timber.



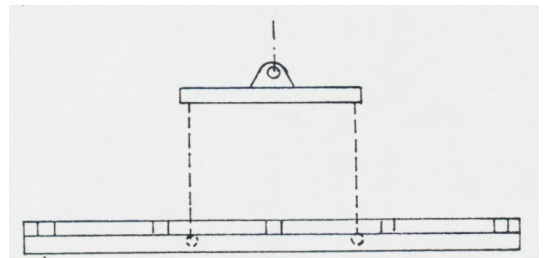
Preparation of bearing

Condition for optimally laid slats is that the crown of the walls of the passage is preferably made symmetrically. Wobbling and the occurrence of cracks can be avoided like that. The bearing depth stated in the static has to be followed. Further information you will find in our brochures. Small measurement intolerances of ± 3 mm are due to the structure of the material and therefore allowed. Unevenness has to be balanced with adequate measures. (Roofing felt, rubber strips, mortar bed).

Laying

Damages, breakages and cracks can only be avoided through accurate handling. **Faulty slats are not to be used. The faulty merchandise has to be stored carefully, so that an inspection through one of our staff is possible. Once the slats have been laid, it is difficult to assess the reason for the fault. These faults will not be accepted by us. Dimensional tolerances, which are possible and valid according to EN 12737 have to be accepted.**

Under no circumstances should the slats be transported over bad, uneven ground.



There are no vehicles allowed onto the slats! Please note the stamps situated on the concrete slats indicating the production date. The earliest time weight is allowed to be put on the slats is 28 days after production.

As laying aid some sort of lifting equipment should be used. Only use lifting accessories where the diagonally pulling of the ropes or chains will be avoided (see drawing).

If the slats are transported with chains or ropes, the edges have to be protected appropriately with rubber or wood. Only this way damage of the edges can be avoided. The hanging points have to be directly next to the squared timbers/cardboard strips. When adjusting the slats a wooden beam has to be used, not a crowbar.

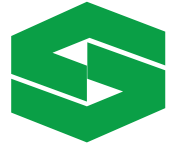
Before use

After laying, burs and unevenness in all gaps have to be removed on site with a saddle or similar tool.

During building phase the already laid slats have to be protected against falling building materials i.e. through carefully covering them with planks or formwork panels. Do not erect scaffolding directly onto the slats!

Although high quality concrete is used, it is possible that the adjoining slats in the feeding area in pig pens are often affected by acids. Before letting animals into the pen it is advised to seal the floor with a protective coating or to fit a grooved plastic board.

our locations |



SUDING Beton- und Kunststoffwerk GmbH
Vestruper Straße 6 • D-49456 Lüsche
Tel. +49 (0) 5438/9410-0 • Fax 9410-20
info@suding.de



SUDING Beton- und Kunststoffwerk GmbH
Dessauer Str. 1 • 39619 Arendsee-Kleinau
Tel. +49 (0) 39399/96666 • Fax 96799
kleinau@suding.de



SUDING Spaltenboden GmbH
Höhenbergweg 9 • 29348 Eschede
Tel. +49 (0) 5142/98900 • Fax 989020
eschede@suding.de



SUDING Beton- und Kunststoffwerk GmbH
Heeslinger Straße 16 • 27404 Weertzen
Tel. +49 (0) 4287/266 • Fax 411
weertzen@suding.de

contact